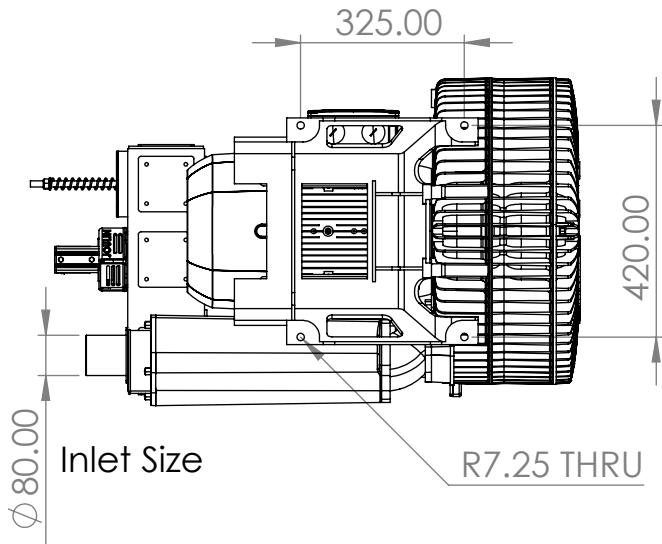
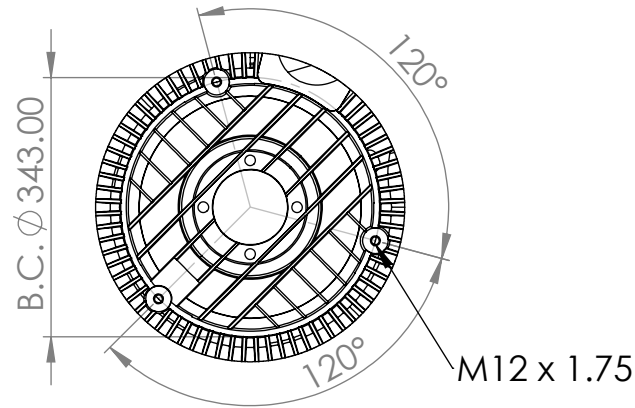


### Mounting Pattern (Foot)

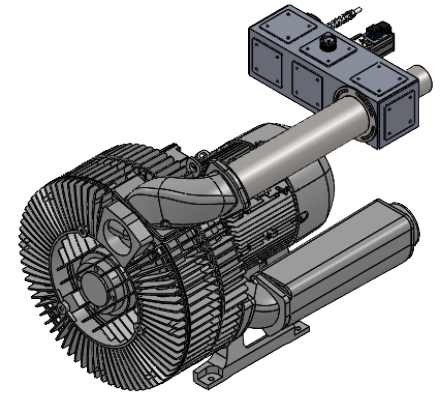
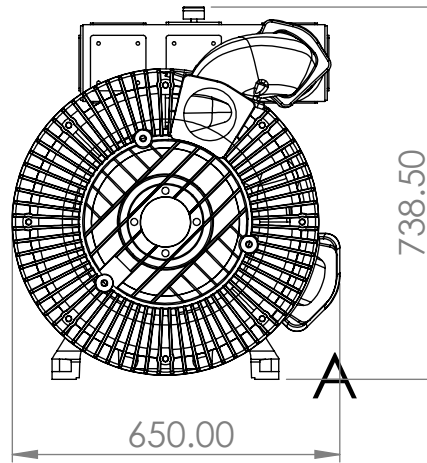


### Mounting Pattern (Face)



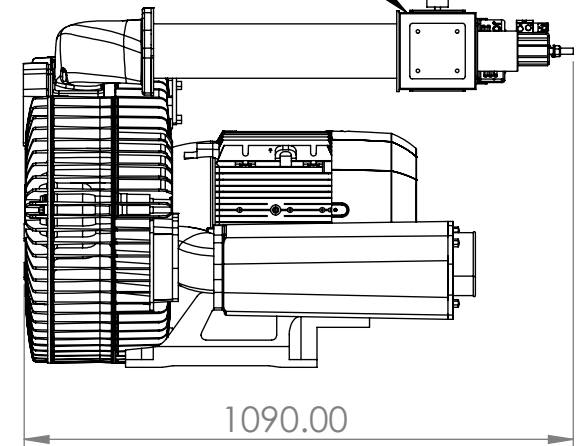
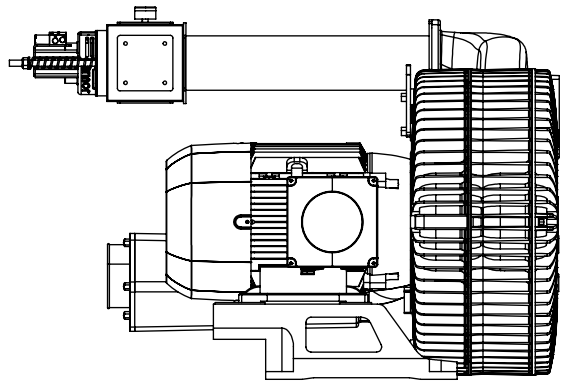
### DETAIL A

SCALE 1 : 10



Dry Gauge

Blower Control Module



Frequency [Hz]	Phase	Rated Motor Power [kW]	Max Vacuum [mbar]	Input voltage [V]		Input Motor Current [A]	Flow at zero Vacuum [m3/h]	Sound pressure level Db [A]	Weight kg [Lb]	Weight kg [Lb] w/BCM
Reference :2BH20780-2AAKP6-BA / PN :0000.036.000.014 - Assembly Reference (Includes BCM) : 0000.036.001.009										
50	3	12.6	-420	YY	190-210	46.6	720	73	191 [421]	202 [444]
				Δ	220-240	40.3				
				Y	380-420	23.3				
60	3	14.5	-440	YY	220-240	46	830	77	191 [421]	202 [444]
				Y	440-480	23				
				Δ	475-525	18.6				
Reference :2BH20780-2AAQP5-BA / PN :0000.036.000.015 - Assembly Reference (Includes BCM) : 0000.036.001.010										
50	3	12.6	-420	Δ	475-525	18.6	720	71	191 [421]	202 [444]
60	3	14.5	-440	Δ	550-600	18.4	830	76	191 [421]	202 [444]



Scale: 1:15

Rev:

